



Quick set-up guide

Please read this guide carefully before installing or using any of the TextCare home monitoring system.

For more detailed instructions, please refer to the User Manual which is available to view at:
www.textcare.co.uk

Step 1: SIM card activation

Your Main Sensor has a SIM card installed which will now need to be activated. Simply follow the instructions on the giffgaff card supplied in the box. You will also need to add credit (logging only requires 30Mbytes/month).

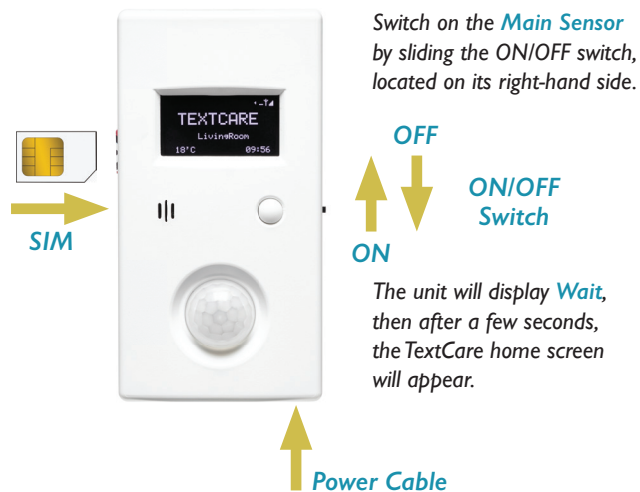
Giffgaff uses the O2 network but TextCare will work with most other network providers. If you would like to use a different SIM card, please refer to the User Manual for instructions.

Step 2: Main Sensor installation

Find a suitable location for the Main Sensor which is close to a mains power outlet, away from any other electrical devices or radiators and at a height where the Sensor will have a good line of sight of the area where movement will normally occur. Peel off the protective layers from the pre-fitted Velcro sticky strips and fix into position by pushing the sensor onto the surface.

Step 3: Switching on

Plug one end of the power cable into the adaptor and the other end into the socket at the base of the Main Sensor. Plug the mains adaptor into a power outlet, switch the socket on and allow to charge for 15 minutes.



The top right of the screen will show connection information. The GSM symbol indicates the SIM is working. It may take up to 20 seconds for the signal to be displayed and will need to show at least two bars for the system to work.



Step 4: Register the primary user's phone

Add the SIM phone number to your mobile phone and save as a contact e.g. TextCare.

You must then register your phone to the TextCare Main Sensor by sending the text: **#phone1** to the number that you saved in your phone.

#phone1

After a short time, you will receive an acknowledgement text back to your phone.

Registered to
TextCare
Phone#1

To register more phones, send the text **#phone** from each phone. You can register eight phones in total.

Step 5: Getting a report

To get an activity report sent to your mobile phone, send the text: ?

?

TextCare will then send your phone a text showing the current information for each sensor.

Lounge 21°C
Last movement
08:00
Light - - - 5 - -
Sound - - - - 8 -

TextCare is now monitoring.

Step 6: Setting up logging to your online portal

Your TextCare Main Sensor is pre-configured to log information to your online portal using the giffgaff SIM card. It is not necessary to use this feature if you would prefer not to. If you have used a different SIM, please refer to the User Manual for configuration instructions.

To start logging, send the text: **LOGON**

LOGON

Once set-up, the data may take up to one hour to become available to view.

You can remain logging to your online portal permanently as it uses a relatively small amount of data, which the minimum monthly top-up will cover.

If you would like to pause or stop logging data, send the text: **LOGOFF**

LOGOFF

Step 7: View your online portal

Visit www.textcare.co.uk from a phone, tablet or computer and click [Login to your TextCare](#).

You will be prompted to register and then add your TextCare system by entering the TextCare serial number and primary user's phone number (**#phone 1**). Your serial number is displayed on the Main Sensor screen by pressing the button underneath the display once.

You will now be able to view the data graphs, configure your sensors and set-up alarms and reports. Please refer to the User Manual for instructions.



Adding Sensors

Sensors are supplied ready to turn on and connect to your Main Sensor. They are battery operated and come with a pre-installed battery. Sensors will automatically register with your TextCare Main Sensor once they have been switched on.

Room Sensors

Switch on by pressing the recessed button on the rear with a pen nib. The white LED window will then flash.

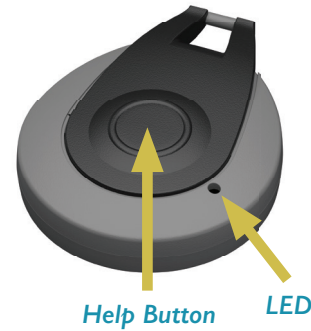
Find a suitable location for the Room Sensor; away from any electrical devices and radiators and at a height where it has a good line of sight of the area where movement would normally occur. Fix into position using the pre-fitted Velcro sticky strips.



Pendant

Switch on by pressing the Help Button briefly. The white LED will flash.

The Pendant can be carried in a pocket or attached to a belt or necklace.



Door Sensor

Switch on by pressing the Button briefly. The white LED will flash.

Using the pre-fitted Velcro sticky strips, fix into position on the outer edge of a door, high up above the handle.

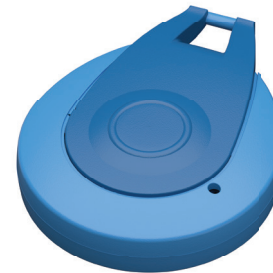


Visitor Sensor

Switch on by pressing the Button briefly. The white LED will flash.

The Visitor Sensor can be carried in a pocket or bag or attached to a belt or worn as a necklace.

Visitor information is only available to view online, no text reporting is available.



Please read carefully before installing or using the TextCare home monitoring system.

TextCare home monitoring products are an aid to monitoring and are not intended to be relied upon as an emergency alarm system. They do not guarantee detection of all monitoring activities and are not a substitute for regular care visits. It is the user's responsibility to confirm the information TextCare is providing.

TextCare products rely upon mains power being available in the room where the Main Sensor is installed and also on the reliability of the mobile network and data availability. TextCare Limited accepts no responsibility for loss of information/lack of data caused by disruptions to these services.

TextCare limited takes no responsibility for personal, property or revenue loss while using the system and will not accept any liability relating to the installation or use of this equipment.

TextCare Limited's liability is limited to the value of the purchased system. This disclaimer does not affect your statutory rights.

TextCare Limited is not responsible for the quality or reliability of the cellular service.



For more support or information, please contact us

Tel: 01245 324958

Email: enquiries@textcare.co.uk

TextCare Limited
Unit 6, Tabrums Industrial Park
Tabrums Lane
Battlesbridge
Essex. SS11 7QX

For detailed instructions on how to set-up your TextCare home monitoring system, please refer to the User Manual at: www.textcare.co.uk/installation&setup